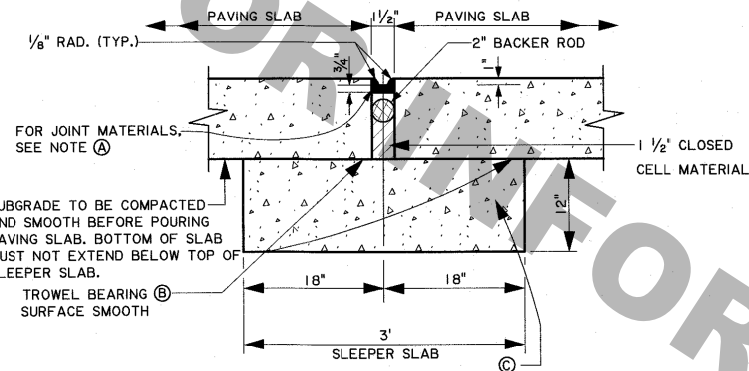
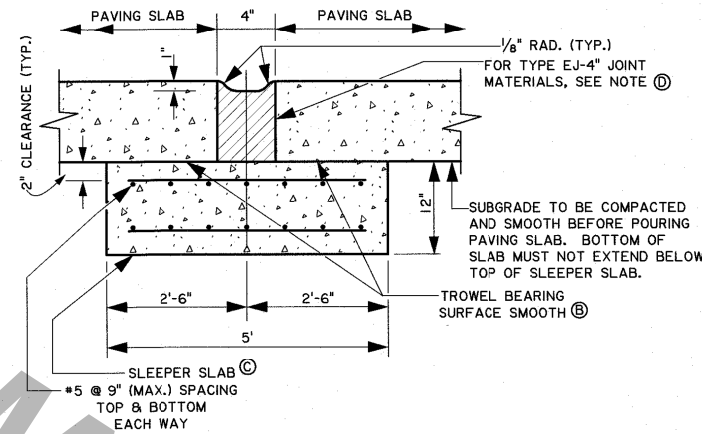


NOTES:

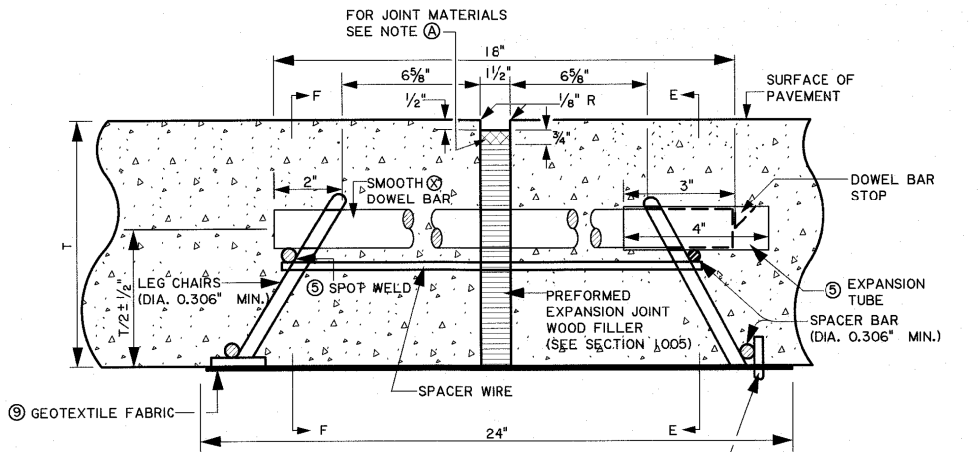
- (A) ONE OR TWO COMPONENT SILICONE CONFORMING TO SECTION 1005.
- (B) TAR PAPER EQUIVALENT TO 30 lbs./100 ft² SHALL BE PLACED BETWEEN THE SLEEPER SLAB AND THE PAVING SLAB.
- (C) SLEEPER SLAB SHALL BE CONSTRUCTED OF CLASS "A1" OR PAVEMENT TYPE CONCRETE AND INCLUDED IN THE COST OF THE PAVEMENT. PROVIDE DEFORMED GRADE 60 REINFORCING STEEL.
- (D) JOINT SHALL BE FILLED WITH A PREFORMED POLYURETHANE FOAM TYPE FILLER CONFORMING TO SECTION 1005.
- (E) SEE DETAIL "G" - EJ-4" BASE DRAIN OUTLET FOR UNDERDRAIN DETAILS (SHEET 3 OF 3)



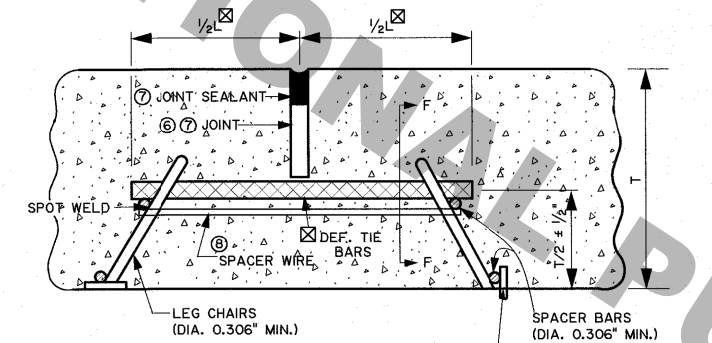
**SECTION A-A
TYPE EJ-1 1/2"**



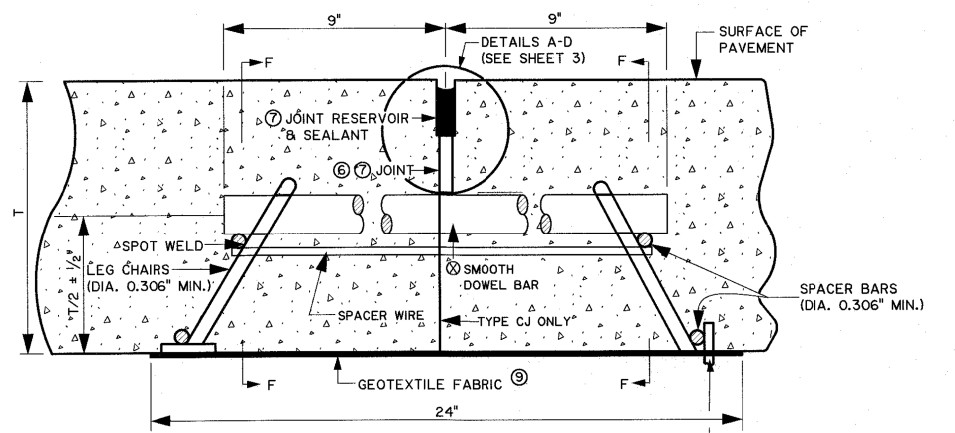
**SECTION C-C
TYPE EJ-4" JOINT
AND SLEEPER SLAB**



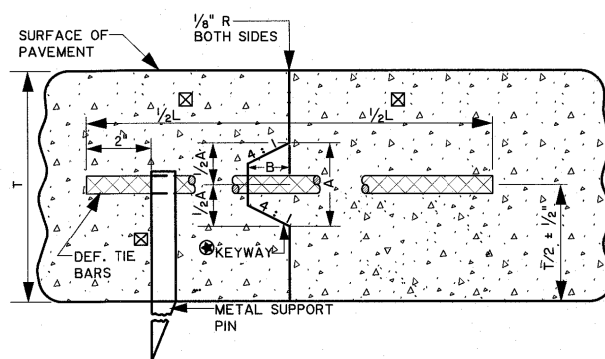
TYPE EJ ALTERNATE (TRANSVERSE EXPANSION JOINT)
(NOT ALLOWED FOR DESIGN SPEED > 45 MPH)
SEE TABLE I (SHEET 1 OF 3)



**SECTION D-D
TYPE LJ (WITHOUT KEYWAY)
(LONGITUDINAL JOINT)**
(REQUIRED WHEN PAVEMENT WIDTH EXCEEDS 15') (SEE NOTE (C))
SEE TABLE I (SHEET 1 OF 3)

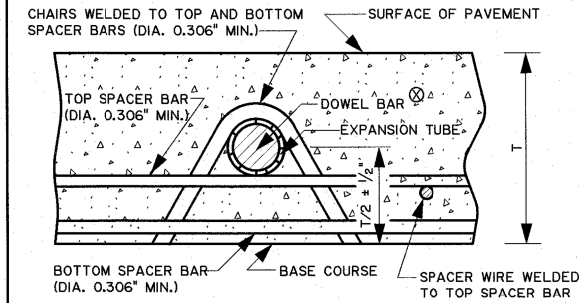


**SECTION B-B
TYPE TCJ OR CJ (TRANSVERSE CONTRACTION JOINT OR CONSTRUCTION JOINT)**
SEE TABLE I (SHEET 1 OF 3)

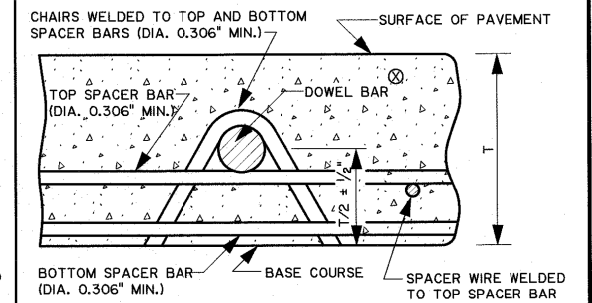


**SECTION D-D
TYPE LCJ (WITH KEYWAY)
(LONGITUDINAL CONSTRUCTION JOINT)**

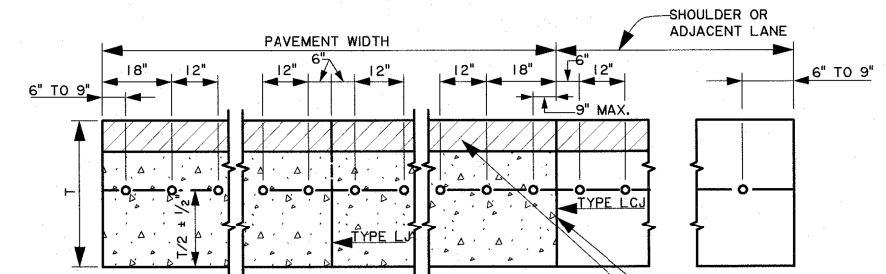
- FOR KEYWAY DIMENSIONS A & B SEE TABLE I. IN LIEU OF THE KEYWAY, ONE OF THE FOLLOWING OPTIONS WILL BE ALLOWED:
 - A. INSTALL TIE BARS OF THE SIZE SHOWN IN TABLE I, AT 1/2 THE SPACING.
 - B. INSTALL TIE BARS 1/4" LARGER THAN THE TIE BAR DIAMETER SHOWN IN TABLE I, AT THE SAME SPACING.
- SEE TABLE I (SHEET 1 OF 3)



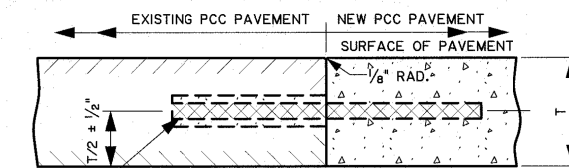
SECTION E-E
SEE TABLE I (SHEET 1 OF 3)



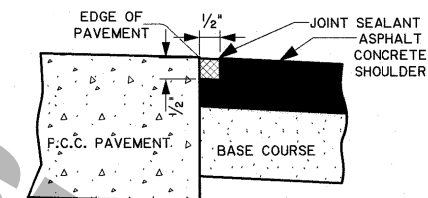
SECTION F-F
SEE TABLE I (SHEET 1 OF 3)



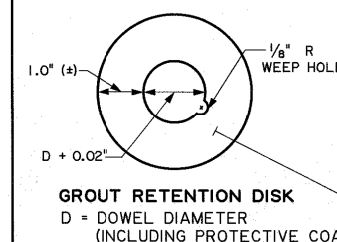
**SECTION G-G
DOWEL BAR SPACING FOR TYPE TCJ, CJ, AND EJ JOINTS**



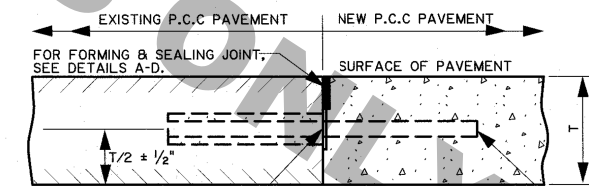
**SECTION H-H
TYPE LBJ
(LONGITUDINAL BUTT JOINT)**
DEFORMED TIE BARS OF THE SIZE, LENGTH AND ONE HALF THE SPACING SPECIFIED IN TABLE I SHALL BE USED. THE BARS SHALL BE INSTALLED IN EXISTING PAVEMENT BY DRILLING HOLES 1/8" LARGER THAN THE BAR DIAMETER TO A REQUIRED DEPTH OF 1/2 THE BAR LENGTH. THE HOLES SHALL BE DRILLED AND FILLED IN ACCORDANCE WITH SECTION 601 BEFORE INSERTION OF THE TIE BARS.



**SECTION I-I
TYPE PJ
(HOT Poured SEALANT SECTION 1005)**



GROUT RETENTION DISK
D = DOWEL DIAMETER
(INCLUDING PROTECTIVE COATING)



**SECTION J-J
TYPE BJ
(TRANSVERSE BUTT JOINT)**

- SMOOTH DOWEL BARS OF THE SIZE, LENGTH AND SPACING SPECIFIED IN TABLE I SHALL BE USED. THE BARS SHALL BE INSTALLED IN EXISTING PAVEMENT BY DRILLING HOLES 1/8" LARGER THAN THE BAR DIAMETER TO A REQUIRED DEPTH OF 1/2 THE BAR LENGTH. THE HOLES SHALL BE DRILLED AND FILLED IN ACCORDANCE WITH SECTION 601 BEFORE INSERTION OF THE DOWEL BARS.



Hoan D. Dang
5/19/17

NOT TO SCALE

SHEET NUMBER		PARISH		CONTROL SECTION		STATE PROJECT	
DESIGNED BY: H. DANG		CHECKED BY: S. ARDIN		DESIGNED BY: H. DANG		CHECKED BY: S. ARDIN	
DATE: 5-11-2017		REVISION OR CHANGE ORDER DESCRIPTION		BY:		DATE:	
APPROVED BY: <i>Janice P. Williams</i>		CHIEF ENGINEER		NO. DATE		CP-01 - STANDARD PLAN	
PORTLAND CEMENT CONCRETE PAVEMENT DETAILS				DOTD DOTD ROAD DESIGN			